

I am looking forward to my student life at ICU.



97.3%

※2

How ICU Students find themselves just after admission. ※1

2019



I consider myself able to make sound judgements.



87.3%

※3

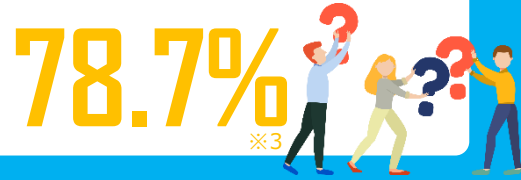
I believe I possess intellectual curiosity and creativity that transcend disciplinary boundaries.



83.5%

※3

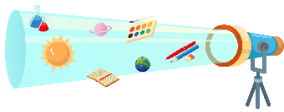
I consider myself able to think logically and critically.



78.7%

※3

I consider myself to be proactive in identifying problems.



70.5%

※3

I believe I possess the strength of character necessary to take on and solve problems and the ability to get things done.



75.5%

※3

I believe I possess the global communication skills necessary for engaging in dialogue with people from diverse cultures.



78.8%

※3

Pick Up

JLP students had more significant^{※4} and positive self-assessment in four of the six items which asked "the ability to think you already have."



1 Global communication skills necessary for engaging in dialogue with people from diverse cultures.

2 Ability to think logically and critically.

3 The strength of character necessary to take on and solve problems and the ability to get things done

4 Ability to make sound judgements.

※1 This is based on the result of "ICU New Students Survey" performed in April / September 2019.

※2 It shows the percentage of "I am looking forward to it very much" and "I am looking forward to it."

※3 It shows the percentage of "To a great extent" and "To some extent."

※4 This is based on the result of the Mann-Whitney U test (a significance level of 0.05) after classified the respondents into ELA students and JLP students.