

AY2020 Sakura Replanting Project Report

The following is a report of the AY2020 Sakura Replanting Project (hereafter referred to as "Project"). Please refer to Appendix 1 for locations of the replanted *sakura* trees (i.e., cherry trees) in AY2020.

**"Health degree" and "explanatory notes for health degree" that are the diagnosis results by a tree doctor in AY2018 are also indicated in Appendix 1.

1. Implementation Report in AY2020

In the results of the tree doctor's diagnosis implemented in AY2018, 12 cherry trees had shown "significant damage". In addition, cherry trees lined throughout McLean Avenue have shown signs of aging. Therefore, we replanted six cherry trees of the Avenue in AY2020 as follows.

Activity Report in AY2020

- 1) Six cherry trees (No.9, No.120, No.127, No.134, No.149, and No.152) were felled and replaced with 6-meter mature trees.
- 2) One 6-meter mature cherry tree was newly planted on the corner of the northwest side of the old rotary (nearby the Administrative Building).

Moreover, some cherry trees were suffering from poor conditions that inhibit their growth, such as witch's brooms. Dead branches and hanging branches that are at risk of falling were also discovered. From the perspective of ensuring the healthy growth of cherry trees and the safety of pedestrians, we removed these items, as part of care since AY2018.

Please refer to Appendix 2 for the details of replanted years and locations that were conducted before AY2018.

2. Implementation Costs in AY2020

The implementation costs for the Project in AY2020 was **JPY 3,685,000 (including sales tax)**

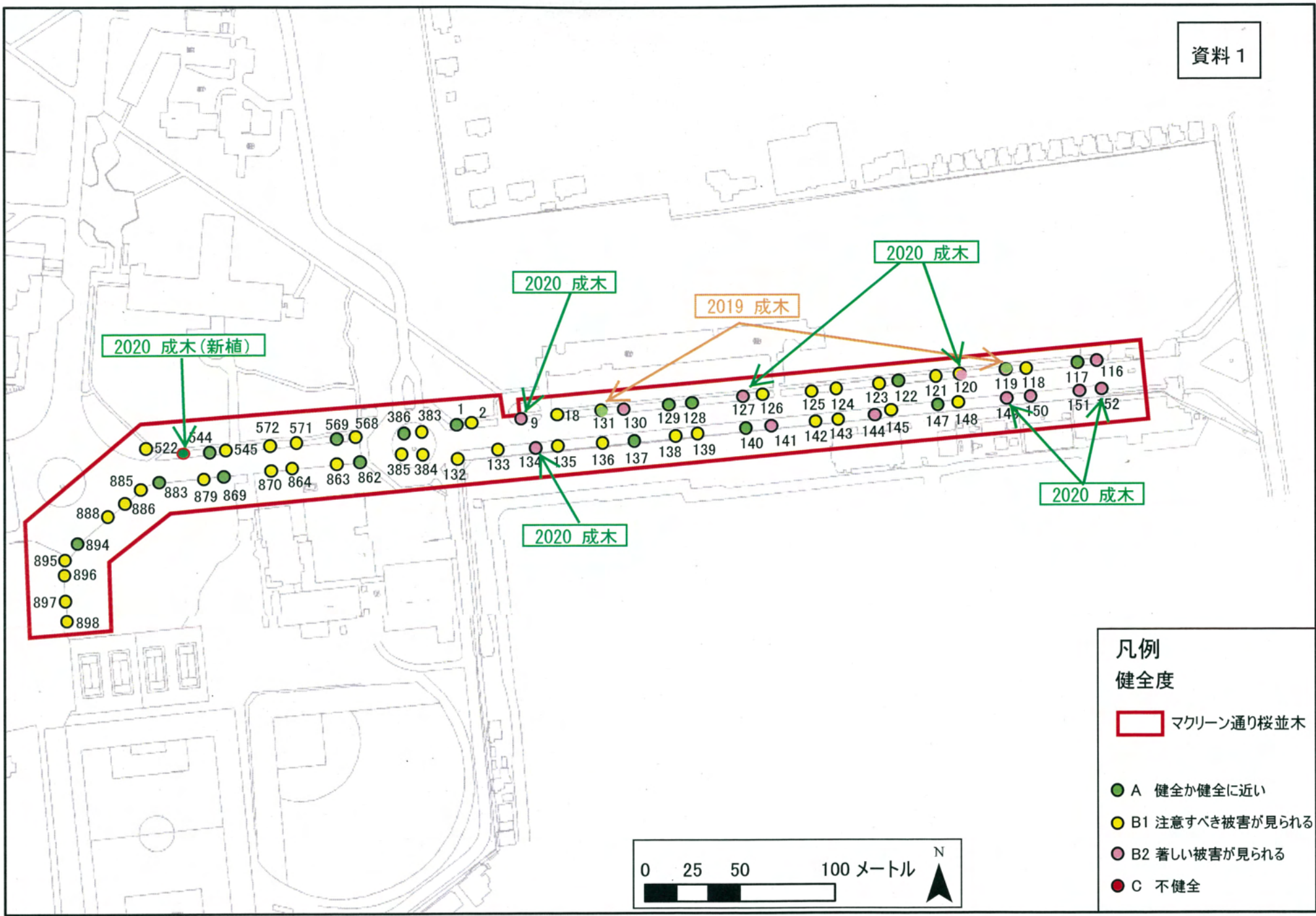
The details are stated below.

(Unit: JPY)

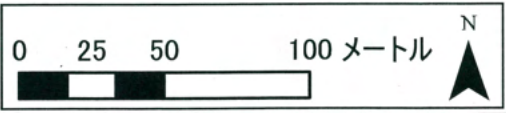
Activity	Costs (including sales tax)	Note
1) Replanting (Six of 6-meter mature trees)	3,423,200	Including the costs for felling, uprooting changing the soil, removal of surplus soil, haulage, etc.
2) Newly Planting (One 6-meter mature tree)	261,800	Including the costs for changing the soil, removal of surplus soil.

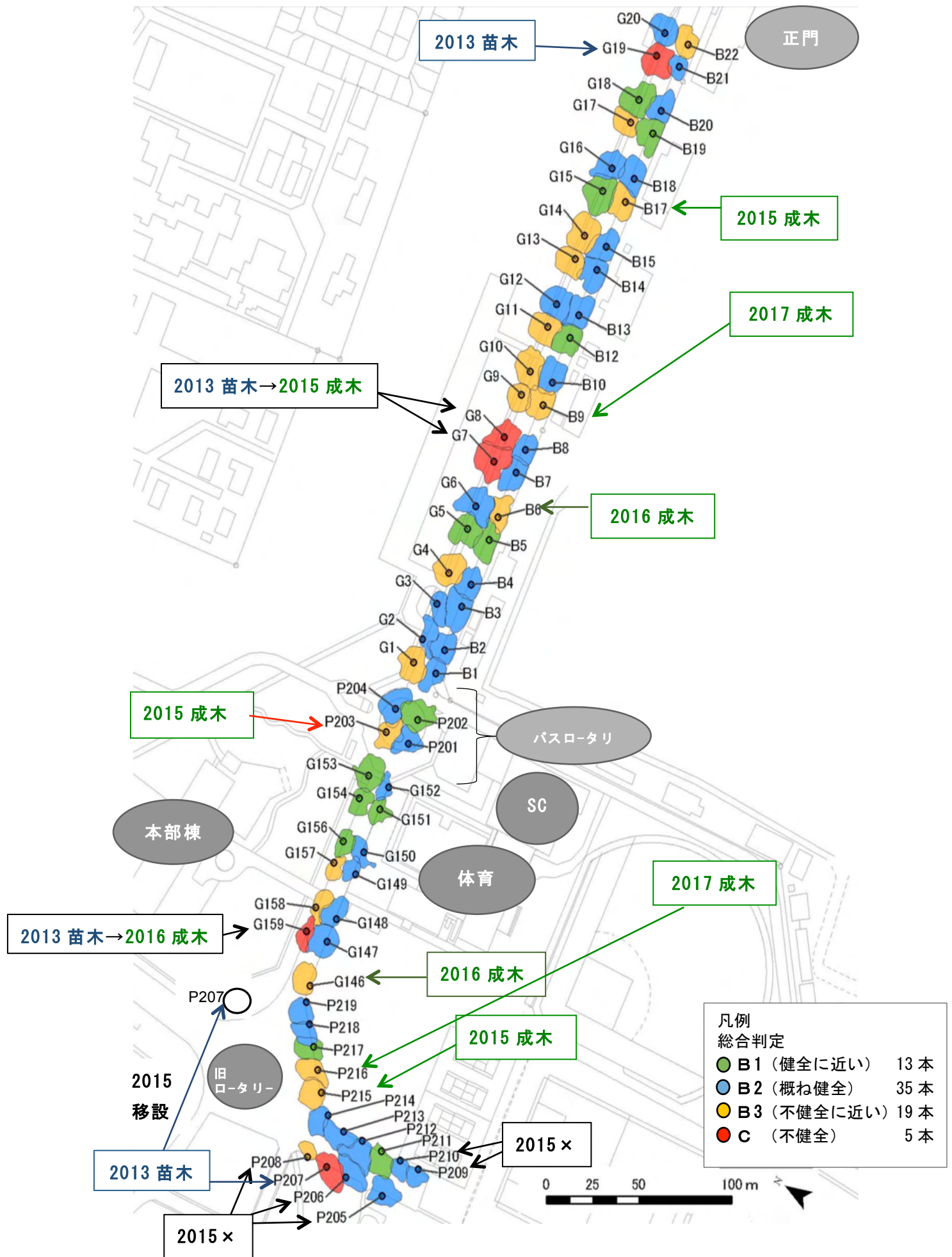
[Report] Amount Utilized and Balance of Sakura Donations (as of March 31, 2021)

- (1) Total amount of donations 42,905,193 yen
- (2) Total amount utilized: 11,496,180 yen
- (3) Balance of donations: 31,409,013 yen



- 凡例
- 健全度
- マクリーン通り桜並木
 - A 健全か健全に近い
 - B1 注意すべき被害が見られる
 - B2 著しい被害が見られる
 - C 不健全





参考:2020年度桜植替写真

NO.9



NO.120



NO.127



NO.134



NO.149



NO.152



新植

